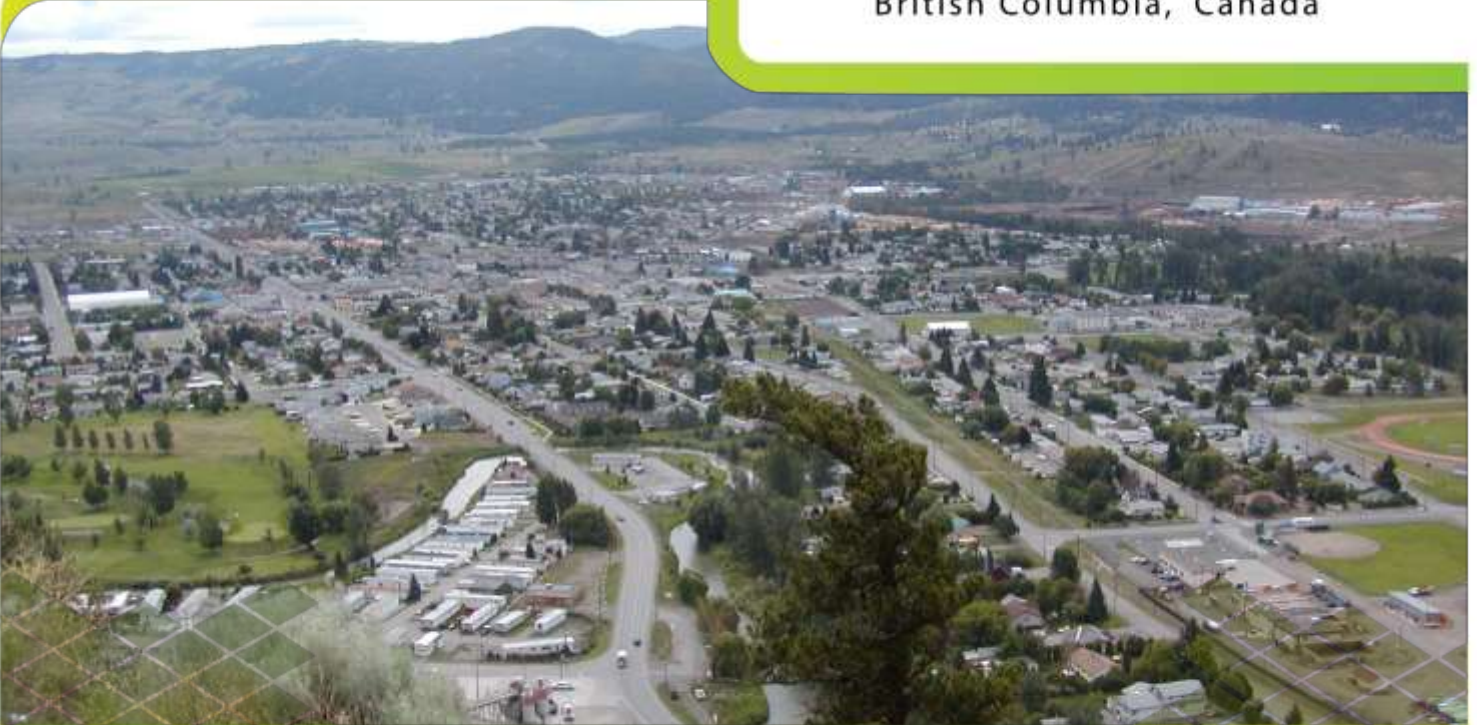




City of

Merritt & Area

British Columbia, Canada



Investment - Ready
Community Profile



BRITISH COLUMBIA BUSINESS ADVANTAGE

British Columbia is a strategically located, resource-rich economy with many competitive advantages and incentives for business.



British Columbia has one of the most attractive investment climates for business in North America.

Manufacturers, for example, enjoy benefits such as:

- **Strong economic fundamentals** and market opportunities associated with major, long-term projects
- **Low Tax Rates** (personal and corporate) that rank BC among the lowest in Canada – complemented by sales tax exemptions on machinery and tax credits for research and development expenditures
- **Competitive Operating Costs** including low cost electricity relative to elsewhere in Canada or the US
- **Competitive Wage Rates** reflecting a balanced and growing labour pool
- **Growing Labour Supply** with government initiatives that are driving labour mobility into BC and training our existing workforce assets
- **Welcoming Communities** that keenly encourage new manufacturing and service investments
- **Financial Incentives** for capital investments and job creation in northern BC (up to \$5,000 per new job). *Contact Northern Development Initiative Trust.*

CONTENTS

1. Demographics	6
Population	6
Household Income	6
Workforce Education Attainment	7
Language Knowledge	7
2. Labour Force	8
Employment by Industry	8
Top Employers	9
Average Income By Occupation – Thompson Okanagan Kootenay Area	9
Labour Force	11
Employment Rate	11
Labour Participation Rate	11
Commuting	11
3. Payroll Costs.....	12
Workers Compensation – 2014	12
Employment Insurance – 2014	12
Social Insurance (Canada Pension Plan) – 2014	13
4. Higher Education	14
Four Year Institutions	14
5. Transportation	16
Major Transportation Routes	16
Highways	20
Corridor Specifications	21
Commercial Airports	22
Ports	24
Port Shipping Distances	27
6. Industrial & Commercial Land Use.....	28
Land Designated in Official Community Plan	28
Local Permit Approvals	29
7. Utilities	31
Water System – City of Merritt	31
Waste Water System – City of Merritt	31
Landfill and Waste Management	33
Licensed Hazardous Materials Disposal	33

Electric Power	34
Natural Gas	35
Telecommunications	36
8. Business Support Services	37
9. Government	38
Municipal Government	38
First Nations Government	38
Regional District	39
Provincial	40
Provincial Government Representation	40
Federal Government Representation	40
10. Housing	41
Housing Characteristics	41
Average Housing Values	41
11. Taxation	42
Corporate Income Tax	42
Personal Income Tax	42
Sales / Use Tax	42
Sales Tax Rate by Utility	43
Property Tax – City of Merritt	44
Property Tax – Electoral Area M	44
Property Tax – Electoral Area N	45
12. International Resources	46
Investment and Business Support Offices	46
Financial Institutions	48
Employment Assistance	48
Air Transportation Service	49
13. Quality of Life	50
Climate	50
Culture	51
Health	53

1. DEMOGRAPHICS

POPULATION

MERRITT & AREA

Population By Age Group	Population (2011)	Distribution
Under-18	2,190	22.6%
18-34	1,325	13.7%
35-54	2,720	28.1%
55-74	2,695	27.8%
75-Older	750	7.7%
Total:	9,680	100.0%
Median Age:	50.4	

BRITISH COLUMBIA

Population By Age Group	Population (2011)	Distribution
Under 18	952,525	21.6%
18-34	844,590	19.2%
35-54	1,299,845	29.5%
55-74	985,990	22.4%
75-Older	317,100	7.2%
Total:	4,400,050	100%
Median Age:	41.9	

Data Source: StatsCan – 2011 Census Merritt & TNRD Areas M&N– “Age Characteristics”– www12.statcan.gc.ca/census-recensement/index-eng.cfm

HOUSEHOLD INCOME

Household Income

2010

Number of Households

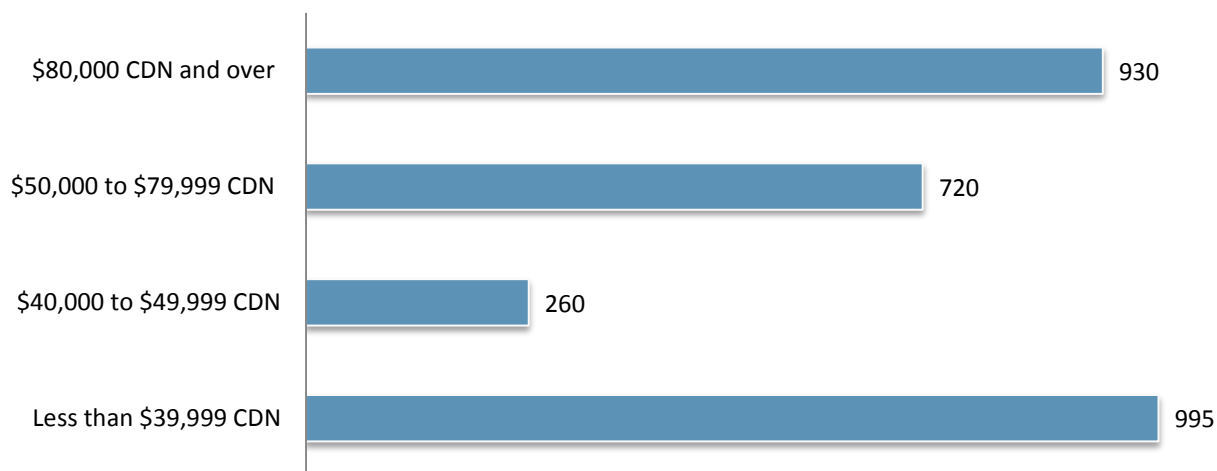
2,900

Median Income - All Families

\$61,890 (CDN)

Data Source: StatsCan – 2011 National Household Survey – “Income of Households in 2010”– www12.statcan.gc.ca/nhs-enm/2011/

INCOME DISTRIBUTION



Data Source: StatsCan – 2011 National Household Survey – “Income of Households in 2010”– www12.statcan.gc.ca/nhs-enm/2011/

WORKFORCE EDUCATION ATTAINMENT

Level of Education	Number Attained	Distribution
High School Diploma Only	1,715	29%
College/University Certificate/Diploma	955	16%
Less than High School Diploma	1,510	26%
Apprenticeship/Trades Certificate/Diploma	415	12%
University Bachelors Degree	555	10%
University Graduate Degree/Certificate	340	6%
*University Medical/Dentistry/Optometry Degree	20	1%

Data Source: Stats Can - 2011 Merritt NHS – “Education”– www12.statcan.gc.ca/census-recensement/index-eng.cfm

*Data represents 2006 figures.

LANGUAGE KNOWLEDGE

Languages Spoken	Citizens
English	8,485
French	165
Punjabi	290
German	145
Dutch	65
Italian	45
Spanish	25
Hungarian	20
Filipino	20
Chinese	20
Afrikaans	15
Korean	15
Polish	15
Ukrainian	10
Japanese	10
Other	165

Data Source: Stats Can Merritt & TNRD Areas M&N – 2011 Census – “Mother Tongue”– www12.statcan.gc.ca/census-recensement/index-eng.cfm



2. LABOUR FORCE

EMPLOYMENT BY INDUSTRY

MERRITT & AREA

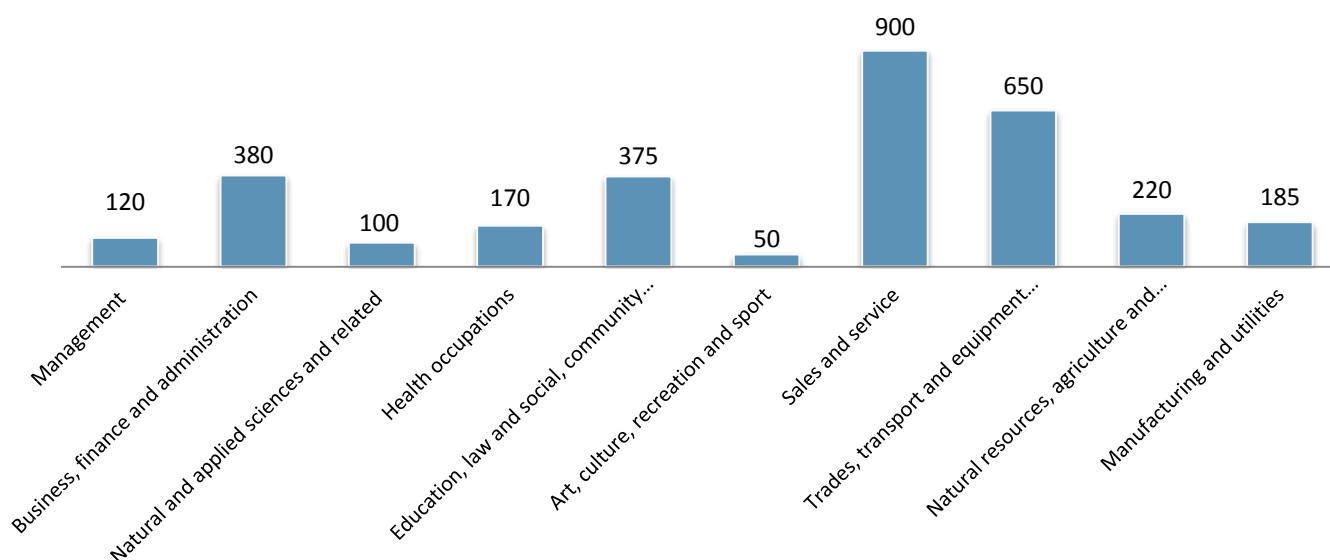
Sector (Industry)	Number
Forestry & Logging	205
Mining and Oil & Gas	135
Construction	215
Manufacturing	340
Transportation, Warehousing & Public Utilities	180
Wholesale Trade	10
Retail Trade	500
Services	1,220
Finance, Insurance & Real Estate	90
Government	175
Total	3,140

BRITISH COLUMBIA

Sector (Industry)	Number
Forestry & Logging	61,210
Mining and Oil & Gas	25,450
Construction	181,510
Manufacturing	148,810
Transportation, Warehousing & Public Utilities	131,890
Wholesale Trade	90,560
Retail Trade	266,265
Services	1,106,670
Finance, Insurance, Real Estate & Leasing	203,910
Government	143,875
Total	2,354,245

Data Source: Stats Can - "2011 Merritt NHS Profile" - <http://www12.statcan.gc.ca/nhs-enm/2011/>

EMPLOYMENT BY OCCUPATION



Data Source: Stats Can - "2011 Merritt NHS Profile" - <http://www12.statcan.gc.ca/nhs-enm/2011/>

TOP EMPLOYERS

Company	Sector	Ownership	Website
School District No. 58	Education	Public	www.sd58.bc.ca
Interior Savings	Finance	Private	www.interiorsavings.com
Ministry of Forests	Government	Public	www.gov.bc.ca/for
Nicola valley Health Care	Health Care	Public	www.interiorhealth.ca
Ardew Wood Products	Manufacturing	Private	www.ardew.com
Aspen Planers Ltd.	Manufacturing	Private	www.aspenplaners.ca
N.M.V. Lumber Ltd.	Manufacturing	Private	www.nmvlumber.com
Tolko Forest Products	Manufacturing	Private	www.tolko.com
Douglas Lake Ranch	Primary Industry	Private	www.douglaslake.com
Highland Valley Copper	Primary Industry	Private	www.teck.com

Data Source: Trade and Invest BC - "Leading Employers" - www.britishcolumbia.ca/Invest/

AVERAGE INCOME BY OCCUPATION – THOMPSON OKANAGAN KOOTENAY AREA

Occupation	Median wage 2013 (\$/Hour)(\$CDN)
Accounting and Related Clerks	\$20.22
Administrative Officers	\$21.37
Bookkeepers	\$18.81
Business Development Officers and Marketing Researchers and Consultants	\$26.00
Carpenters	\$23.00
Construction Trades Helpers and Labourers	\$19.00
Delivery and Courier Service Drivers	\$15.00
Electronic Service Technicians (Household and Business Equipment)	\$22.86
Film and Video Camera Operators	\$23.54
Financial Auditors and Accountants	\$27.40
Gas Fitters	\$22.50
Heavy Equipment Operators (Except Crane)	\$25.27
Material Handlers	\$20.00
Mining Engineers	\$29.07
Primary Production Managers (Except Agriculture)	\$30.00
Producers, Directors, Choreographers and Related Occupations	\$25.91

Purchasing Agents and Officers	\$24.81
Railway and Yard Locomotive Engineers	\$32.05
Shippers and Receivers	\$14.92
Supervisors, Recording, Distributing and Scheduling Occupations	\$21.75
Support Occupations in Motion Pictures, Broadcasting and the Performing Arts	\$19.13
Tailors, Dressmakers, Furriers and Milliners	\$13.49
Telecommunications Installation and Repair Workers	\$30.00
Telecommunications Line and Cable Workers	\$26.98
Theatre, Fashion, Exhibit and Other Creative Designer	\$21.87
Truck Drivers	\$23.00
Welders and Related Machine Operators	\$27.60

- For a complete list of Wages and Salaries in Thompson-Nicola BC visit the link below
www.labourmarketinformation.ca

LABOUR FORCE

	Number
Total Population 15 and over	5,665
In Labour Force	3,275
Employed	2,900
Unemployed	375

Data Source: Stats Can – 2011 Merritt NHS Profile – “Labour Force Status”

EMPLOYMENT RATE

	% of Population
Unemployment Rate	11.5%
Labour Participation	57.8%

Data Source: Stats Can – 2011 Merritt NHS Profile – “Labour Force Status”

LABOUR PARTICIPATION RATE

	Labour Participation Rate
Male	59.1%
Female	56.4%

Data Source: Stats Can – 2011 Merritt NHS Profile – “Labour Force Status”

COMMUTING

Place of Residence	Place of Work	Number of People
Merritt	Merritt	1,875
Merritt	Thompson-Nicola Area M	130
Merritt	Logan Lake	85

Data source: Statistics Canada, 2011 National Household Survey, Statistics Canada - www12.statcan.gc.ca/nhs-enm/2011/



3. PAYROLL COSTS

WORKERS COMPENSATION – 2014

		Notes
Average Cost of All Manufacturing Per \$100 Payroll	\$1.91 CDN	Rates set by employer's business activity. Applies up to maximum gross earnings of \$75,700 per year.
Average Rate for Administration Per \$100 Payroll	\$0.17 CDN	There is no separate rating for office occupations in BC- the applicable industry rating applies to all workers. Rates for Business Services range from \$0.10-\$0.79 per \$100 of payroll. Average of \$0.34.
Maximum Weekly Benefit (Net)	\$1025.17 CDN	Maximum per employee set at 90% of average net earnings (after deductions for income taxes, Canada Pension Plan & Employment Insurance), up to maximum wage of \$77,900 per year.

Data Source: WorkSafeBC – www.worksafebc.com

EMPLOYMENT INSURANCE – 2014

		Notes
Taxable Base		Based on gross payroll up to a gross per worker salary of \$48,600 per year.
Percentage Rate (Employer Premium)		
▪ Employee Rate	1.88%	Maximum annual contribution per worker is \$913.68.
▪ Employer Rate	2.63%	Maximum annual contribution per worker is \$1,279.15.
▪ Maximum Weekly Benefits	\$514.00 CDN	

Data source: Service Canada - 2014 Premium Rates - www.servicecanada.gc.ca/eng/sc/ei/benefits/regular.shtml



SOCIAL INSURANCE (CANADA PENSION PLAN) – 2014

		Notes
Taxable Base	Gross Payroll \$3,500 CDN	Based on annual gross salary up to \$52,500, basic exemption of \$3,500. Both employers and employees are required to contribute to the Canada Pension Plan.
Employee/Employer Contribution	4.95%	Employer premium equal to employee premium.
Maximum Annual Employer Contribution Per Employee	\$2425.00 CDN	Employer contribution matches employee contribution.
Rate	4.95%	
Maximum Annual Self Employed Contribution	\$4851.00 CDN	

Data Source: Service Canada – www.servicecanada.gc.ca/eng/isp/cpp/posrttrben/contributors_after65.shtml



4. HIGHER EDUCATION

FOUR YEAR INSTITUTIONS

Institution	Nicola Valley Institute of Technology
Campus/Address	4155 Belshaw Street Merritt, BC V1K 1R1 Tel: 250-378-3300
Website	www.nvit.ca
Driving Distance from Community	Located within Community
Enrolment (2011/2012)	1,470

Institution	Thompson Rivers University
Campus/Address	Box 3010 900 McGill Road Kamloops, BC V2C 5N3 Tel: 250-828-5000
Other Campuses	Williams Lake
Website	www.tru.ca
Driving Distance from Community	87 km
Enrolment (2011/2012)	24,090

Institution	Thompson Rivers University - Open Learning
Campus/Address	Box 3010 900 McGill Road Kamloops, BC V2C 5N3 Tel: 250-828-5000
Website	www.tru.ca/distance
Driving Distance from Community	87 km
Enrolment (2011/2012)	2,962

Data Source: Thompson Rivers University – www.tru.ca
Data Source: Nicola Valley Institute of Technology - www.nvit.ca

TRAINING SERVICES

Institution	Category	Address	Website
Cutting Edge Training	Heavy Equipment & Driver Training	Box 370 2581 Lauder Avenue Merritt, BC V1K 1B8	www.cuttingedgetraining.ca
Fox Consulting Services	Heavy Equipment Training	1650 Williams Crescent Merritt, BC V1K 1B8	www.foxheavyequipmentoperator.com
Merritt Fire Rescue Work Experience Program	Fire Safety Training	1799 Nicola Avenue Merritt, BC V1K 1H6	www.merrittfirerescue.com/WEPIinformation.html
Nicola Valley Institute of Technology	Career Training, Health, Human Services, Business	4155 Belshaw Street Merritt, BC V1K 1R1	www.nvit.ca/default.htm
Sprott-Shaw College	Business, Trades, Health & Development, Tourism & Hospitality Management	301 – 340 Victoria Street Kamloops, BC V2C 2A5	www.sprottshaw.com/

Data Source: DRF Consulting Research, 2013



5. TRANSPORTATION

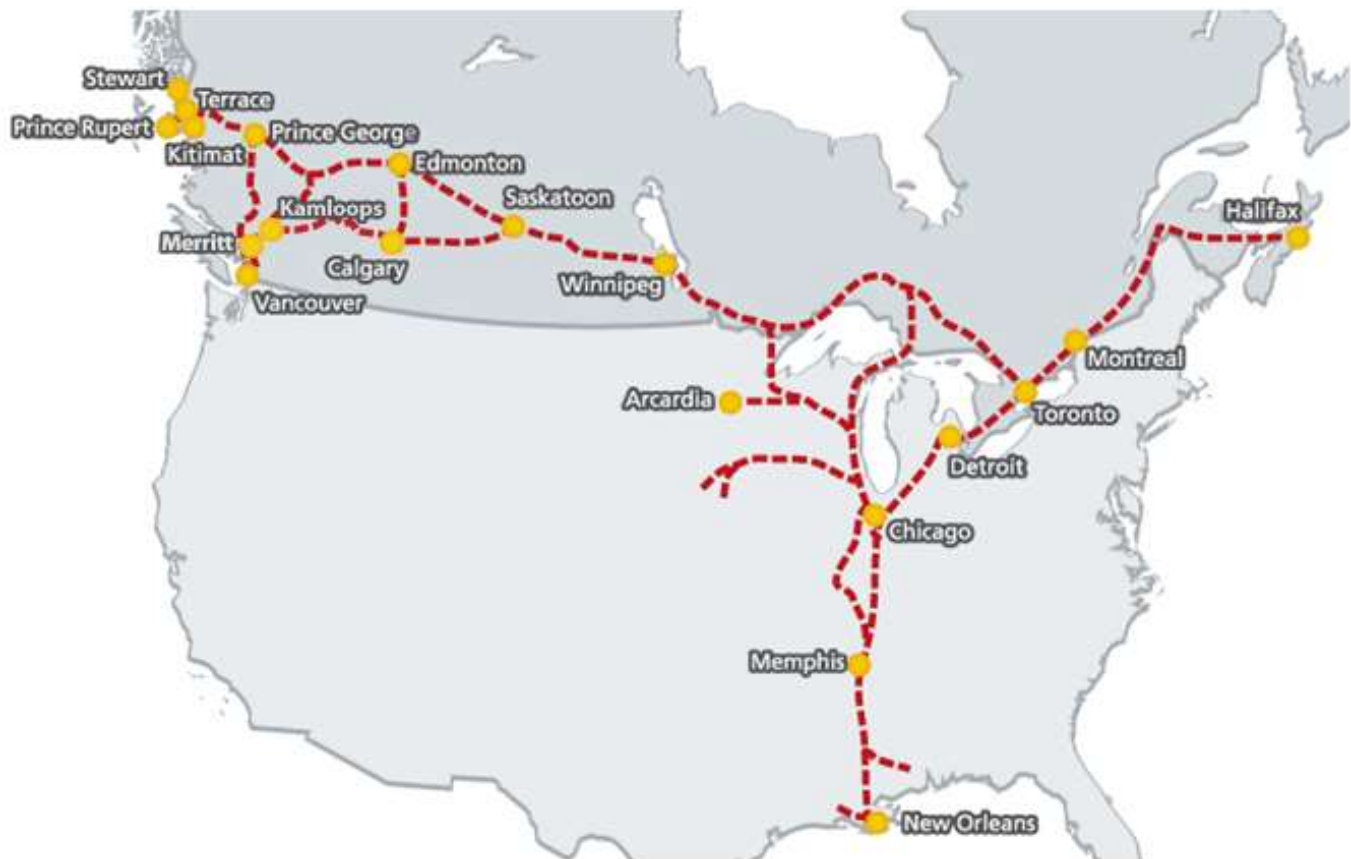
MAJOR TRANSPORTATION ROUTES

PACIFIC GATEWAY

British Columbia's ports in Vancouver, Kitimat, Stewart and Prince Rupert are Asia's closest ports of entry on the west coast of North America, up to 58 hours closer than the ports of Los Angeles and Long Beach.

Canadian ports and airports are seamlessly integrated with road and rail connections to all major U.S. economic centers. British Columbia is the only gateway on the west coast of the Americas served by three transcontinental railways. Today, Canada's Pacific Gateway is an integrated, secure, reliable transportation network that includes world-class airports, seaports, railways, roadways and border crossings, bringing Canada and the North American market to Asia and the world. Canada's Pacific Gateway, through British Columbia's ports in Vancouver, Kitimat, Stewart and Prince Rupert, offers Asian shippers the most direct route between Asia and North America.

Canada's Pacific Gateway is a strong commitment by government and industry partners to make British Columbia's ports the preferred gateway for Asia-Pacific trade, with the most competitive port system and supply chain on the west coast of the Americas. This commitment builds on Canada's longstanding and strong cultural and economic ties with Asia. In the emerging new global economy, Canada's Pacific Gateway is a gateway to the future.



SOUTHERN CORRIDOR

Positioned on the southwest coast of British Columbia, Vancouver is North America's gateway to the world's most dynamic economies. Combining this magnificent port with the three intercontinental railways and efficient road and air connections, the Southern Corridor is a focal point for domestic and international trade and tourism.

Current investments in the South Corridor will support container capacity of six million twenty-foot equivalent units by 2020. It will provide efficient road connections from the port to the U.S. border and Canada's transcontinental highway system, and reliable access to eastern Canada and U.S. markets via three transcontinental railways.

The Southern Corridor is link to both Canada's transcontinental highway and road connections to the U.S. border, providing modern and efficient road connections to the entire continent.

\$7.2 billion has been committed to enhance efficiency, reduce congestion and improve the reliability of goods movement in the South Corridor.

To date, \$1.9 billion has been completed. These investments have improved traffic flows between the port and the U.S. border and enhanced connections to and trade flows along Canada's transcontinental highway system. By 2015, the Southern Corridor will have another \$5.3 billion of additional new road infrastructure, bridges and improvements to efficiently support additional traffic volumes from Port Metro Vancouver's expansions.



HIGHWAY 5

Highway 5 is a north-south route in southern British Columbia, Canada. It connects the southern Trans-Canada route (Highway 1) with the northern Yellowhead route (Highway 16), providing the shortest land connection between Vancouver and Edmonton. It is 524 km (326 mi) in length. The portion of Highway 5 south of Kamloops is known as the Coquihalla Highway, while its northern portion is known as the Southern Yellowhead Highway.

The Coquihalla Highway has created greater access to the interior, cutting travel time to Vancouver by almost two hours while facilitating commuter traffic to and from Kamloops. The result has been increased building activity in the area that has continued for more than a decade.

Highway 5 follows the North Thompson River north from Heffley Creek for approximately 54 km (34 mi), along a parallel course with a branch of the Canadian National Railway, passing through Barriere, to a junction with Highway 24 at Little Fort. 30 km (19 mi) north of Little Fort, while continuing to follow the North Thompson and the CN Railway, Highway 5 reaches the community of Clearwater. It proceeds northeast for another 107 km (67 mi), passing Vavenby en route, to the community of Blue River, and then 109 km (68 mi) further north through the Columbia Mountains, passing by the community of Valemount to its northern terminus at Tête Jaune Cache, where it meets Highway 16.

HIGHWAY 1 – TRANS CANADA HIGHWAY

The Trans-Canada Highway between Victoria British Columbia and St. John's, Newfoundland, joins all ten provinces of Canada and is the world's longest national highway with a length of 7,821 km (4,860 mi.) The British Columbia portion of the highway runs along the path of the Canadian Pacific Railway, through the Thompson Nicola Regional District to the Port of Vancouver.

HIGHWAY 97

Highway 97 is the longest continuously-numbered route in British Columbia , and the longest provincial highway in Canada, running 2,081 km from the Canada/U.S. border at Osoyoos in the south to the British Columbia/Yukon border in the north at Watson Lake, Yukon.

The Cariboo Highway section of Highway 97, between Cache Creek and Prince George, is 441 km in length and is named for the Cariboo region, through which it travels. The Cariboo Highway designation begins at Cache Creek, veering north for 11 km to its junction with Highway 99. North of Highway 99, Highway 97 travels 92 km through Clinton and 70 Mile House, where the British Columbia Railway begins to roughly parallel Highway 97.

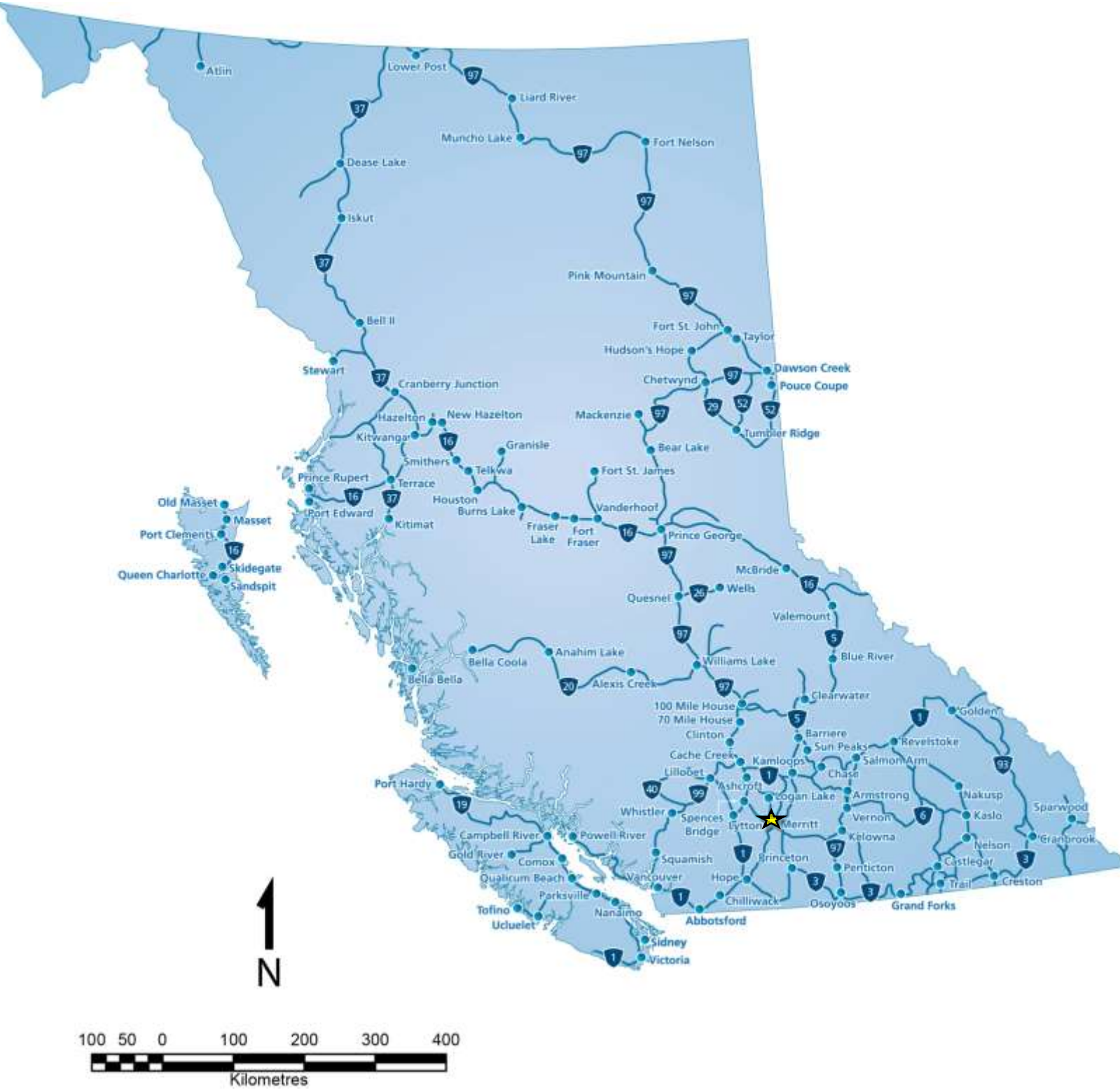
The Okanagan Highway is a 269 km section of Highway 97 between the international border and Monte Creek on the Trans-Canada Highway. It is named for the Okanagan region of British Columbia, through which it largely passes. It begins in the south at the international border crossing north of Oroville, and travels 4 km north to its junction with the Crowsnest Highway at Osoyoos. The highway travels north for 47 km, passing through the Testalinden Creek Landslide and the communities of Oliver and Okanagan Falls. From Okanagan Falls, Highway 97 runs near the western shore of Skaha Lake before arriving at the locality of Kaleden, where Highway 3A diverges west.

13 km north of Kaleden, Highway 97 arrives at the city of Penticton. North of Penticton, Highway 97 follows the western shore of Okanagan Lake for 45 km, through the communities of Summerland and Peachland, before

reaching its junction with Highway 97C just south of Westbank. From there, Highway 97 passes through West Kelowna, Westbank, Lakeview, and reserve lands belonging to the Westbank First Nation until, 15 km northeast of the 97C junction, Highway 97 begins to cross Okanagan Lake via the William R. Bennett Bridge. The highway enters the city of Kelowna upon landfall on the east shore of the lake. 6 km east into the city centre, the highway reaches its junction with Highway 33.

Four kilometres north of the Highway 33 junction, Highway 97 leaves the urbanized area of Kelowna. For the next 43 km, the route travels well east of Okanagan Lake, passing through the community of Winfield, then alongside the west shore of Wood Lake to Oyama. Both of these communities lie within the municipality of Lake Country. Highway 97 then passes along the west shore of Kalamalka Lake before entering the city of Vernon and a junction with Highway 6. The highway then travels north for 10 km to a junction with Highway 97A at Swan Lake, at which point it veers northwest. The highway continues for another 81 km, past the town of Falkland, before it merges onto the Trans-Canada Highway at Monte Creek, following Highway 1 for 105 km west to Cache Creek. As it travels westward, Highways 1 and 97 parallel the Thompson River, passing through the city of Kamloops, where the two highways intersect with Highways 5 and 5A.

HIGHWAYS



CORRIDOR SPECIFICATIONS

Commercial Vehicle Without Permit	Specifications
Maximum Width	2.59 meters
Maximum Height	4.15 meters
Maximum Vehicle Weights	
Super B	63,500 kgs
Single Axel	9,100 kgs
Tandem Axle (Set)	17,000 kgs
Tridem Axle (Set)	24,000 kgs

Commercial Vehicle With Permit	Specifications
Maximum Width	4.4 meters
Maximum Height	4.72 meters
Maximum Vehicle Weights	
Super B	64,000 kgs
Single Axel	9,100 kgs
Tandem Axle (Set)	23,000 kgs
Tridem Axle (Set)	29,000 kgs

PROVINCIAL PERMIT CENTRE

For more information on receiving a commercial vehicle permit please contact **1-800-559-9688**. The core hours of service are from 5am to 10pm, seven days a week and most statutory holidays. The 1-800 number is available to callers anywhere in Canada or the United States. Permits available through this line include:

- non-resident commercial vehicle permits
- term oversize and overweight permits
- single trip oversize and overweight permits
- motor fuel tax permits
- highway crossing permits
- extra-provincial temporary operating permits

HIGHWAY DISTANCES

Metro Area	Distance
Kamloops	87 km
Kelowna	127 km
Vancouver	268 km
Seattle	384 km
Prince George	592 km
Portland	663 km
Calgary	706 km
Edmonton	894 km
Prince Rupert	1,304 km



COMMERCIAL AIRPORTS

Merritt Airport (YMB)

Hub Status	Private
Distance From Community	3.7 km
Approved Capital Expansion	\$1.1 million capital expansion in began 2012
Customs Point of Entry	No
Foreign Trade Zone	No
Full Instrumentation	Yes
No. of Runways	1
Runway Length	4,000 ft x 73 ft
Helicopter Pad	Yes

Valley Helicopters Ltd.

Hub Status	Charter
Main Office	63235 Flood Hope Rd. Hope, BC V0X 1L2
Additional Office	Airport Rd. Merritt, B.C. Telephone: 1-250-378-6261
Helicopter Pad	Yes
About	Valley Helicopters Ltd. offers charter, training and tour services. Recent expansion has allowed Valley Helicopters to provide seismic exploration and other services to the utility and mining sectors.
Website	www.valleyhelicopters.ca

Kamloops Airport (YKA)	
Hub Status	Commercial
Distance From Community	127 km
Hours of Operation	24 hrs / 7 days
Approved Capital Expansion	Runway expansion and facility upgrades completed in 2009
Customs Point of Entry	Yes
Foreign Trade Zone	No
Full Instrumentation	No
No. of Runways	2
Runway Length	1,800 m; 622 m
Helicopter Pad	Yes
Carriers	Jazz Air, Central Mountain Air, Horizon Air, FedEx, Purolator, Canadian Helicopters, Highland Helicopters, Westair Aviation Inc., WestJet
Weekly Non-Stop Flights	56

Data Source: Kamloops Airport (YKA), 2013- www.kamloopsairport.com



PORTS

PORT METRO VANCOUVER

Port Metro Vancouver

Driving Distance from Community	268 km
--	--------

Location of Port	Vancouver, BC
-------------------------	---------------

Terminals:	<p>Port Metro Vancouver offers 28 deep sea and domestic marine terminals that service five business sectors: automobiles, breakbulk, bulk, containers and cruise. To view terminal locations, please click on the Terminals & Facilities tab of our interactive map on the home page of this website.</p> <p>For more information on individual terminals, please visit: http://www.portmetrovancover.com/users/landoperations/terminalsandfacilities.aspx</p>
-------------------	--

Type of Port	Ocean
---------------------	-------

Channel Depth	Minimum - 10 meters (33 feet)
----------------------	-------------------------------

Turning Basin	Unlimited
----------------------	-----------

Shallow Water Barging Facilities	Yes
---	-----

Deep Water Barging Facilities	Yes
--------------------------------------	-----

General Cargo Facilities	Yes
---------------------------------	-----

Containerized Facilities	Yes
---------------------------------	-----

Storage Facilities	Yes
---------------------------	-----

Highways Serving Port	#1, #1A, #7A, #99, #19
------------------------------	------------------------

Railways Serving Port	CN Rail, CP Rail, BC Rail, Burlington Northern Santa Fe Railroad
------------------------------	--

Types of Services	Bulk, Break-Bulk, Automobile, Container, Cruise
--------------------------	---

Port Address	Box 3010, 900 McGill Road, Kamloops, BC, Canada V2C 5N3
---------------------	---

Website	www.portmetrovancover.com
----------------	--



ASHCROFT TERMINAL

Ashcroft Terminal	www.ashcroftterminal.com
Distance from Community	90 km
Services	Industrial Transloading, Materials Handling, Industrial Storage
Type of Port	Inland Terminal Logistics and Transport
General Cargo Facilities	Yes
Containerized Facilities	Yes (future)
Storage Facilities	Yes
Highways Serving Port	#1, #97
Railways Serving Port	CP Rail Mainline, CP Switching Lead and Loading Tracks CN Rail Mainline
Types of Services	Bulk, Break-Bulk, Container (future)
Port Address	1000 Evans Road, Ashcroft, BC, V0K 1A0



CUSTOM POINT OF ENTRY

Canadian Border Services Agency	Abbotsford-Huntingdon
Type of Entry Point	Highway Entry
Location	2 Sumas Way Huntingdon, BC V2S 8B7 Tel: 1-800-461-9999
Canadian Border Services Agency	Douglas
Type of Entry Point	Highway Entry
Location	220 Highway 99 Surrey, BC V3S 9N7 Tel: 1-800-461-9999
Canadian Border Services Agency	Kamloops Airport
Type of Entry Point	Airport
Location	3025 Airport Road; Room 108 Kamloops, BC V2B 7W9 Tel: 1-800-461-9999
Canadian Border Services Agency	Osoyoos Starlite Marina
Type of Entry Point	Port
Location	202 97 th Street Osoyoos, BC V0H 1V1 Tel: 1-800-461-9999

Data Source: Canada Border Services Agency – “Directory of CBSA Offices” – 2013 – www.cbsa-asfc.gc.ca

PORT SHIPPING DISTANCES

The NW Transportation and Trade Corridor ports (Kitimat and Prince Rupert, Stewart) are between 1 and 1 1/2 day closer to general Asia Pacific markets than the Ports in British Columbia's lower mainland; and the Vancouver Ports. The Southern Ports are closer to the Panama Canal and subsequently, the Atlantic. The following table is in nautical miles. The Time/Speed/Distance Calculations are at 16.1439 Kn/Hr., the average speed The Port of Vancouver uses for calculating their shipping to Yokohama, Hong Kong, Kaohsiung (Taiwan) and Xingang (China). Deep-sea vessels travel at various speeds between 14Kn/Hr and 20Kn/Hr. The 'great circle shipping route' to Asia from North America has well documented ocean currents and weather/wind patterns which allows for accurate estimates.

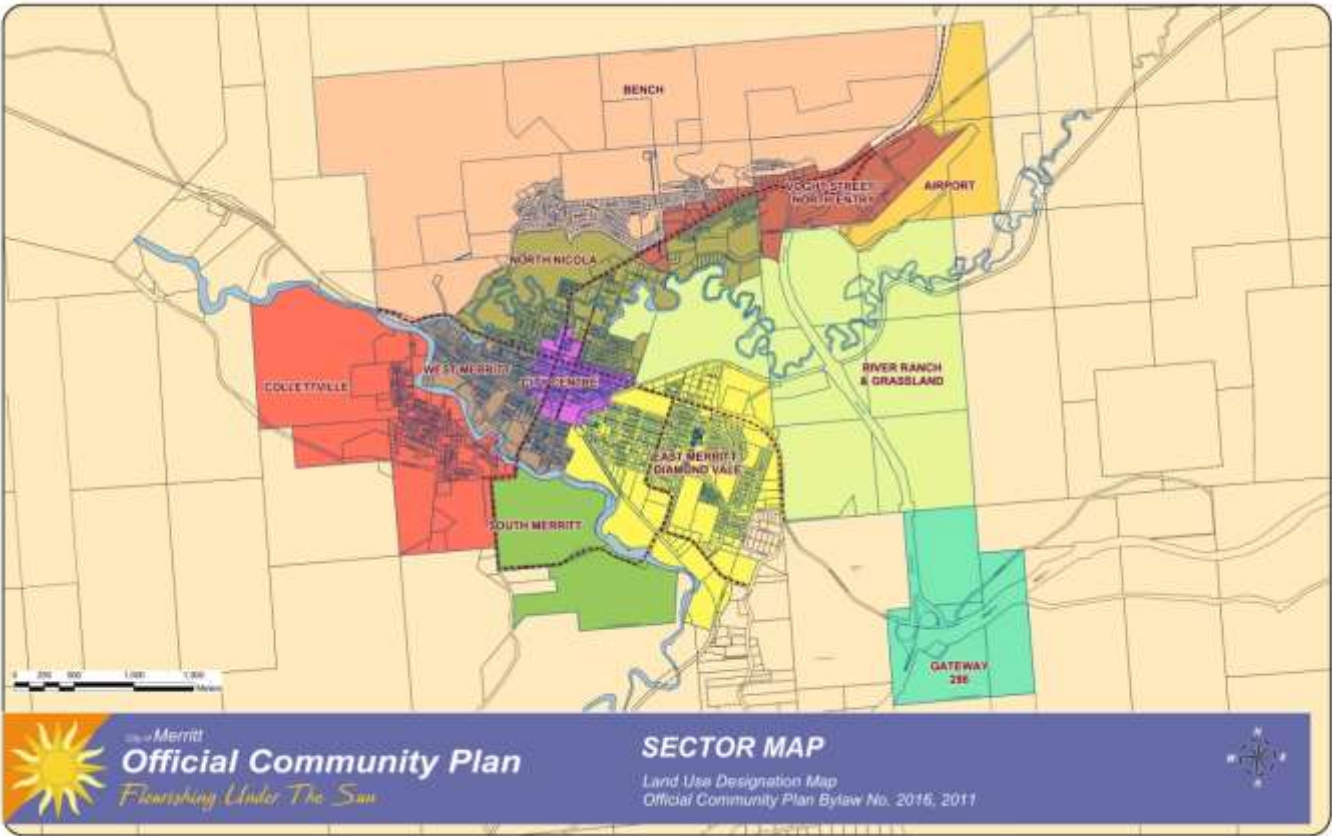
	Kitimat	Prince Rupert	Stewart	Vancouver	Los Angeles	Yokohama (Japan)	Hong Kong	Kaohsiung Kang(Taiwan)	Xingang (China)
Kitimat	--	121 NM 7.5 Hrs	264 NM 17 Hrs	400 NM 1 Day	1,391 NM 3.5 Days	3,941 NM 10 Days	5,444 NM 14 Days	6,,187 NM 16 Days	6,187 NM 16 Days
Prince Rupert	121 NM 7.5 Hrs	--	123 NM 10 Hrs	477 NM 1.2 Days	1,432NM 3.6 Days	3,810 NM 9.8 Days	5,323 NM 13.7 Days	6,110 NM 15.7 Days	6,110NM 15.7 Days
Stewart	264 NM 17 Hrs	123 NM 10 Hrs	--	573 NM 1.5 Days	1,529 NM 4 Days	3,896 NM 10.3 Days	5,406 NM 14.1 Days	5,155 NM 13.4 Days	4,749 NM 12.5 Days
Vancouver	400 NM 10 Day	477 NM 1.2 Days	573 NM 1.5 Days	--	991 NM 2.5 Days	4,262 NM 11 Days	5,763 NM 15 Days	6,587 NM 17 Days	7,578 NM 20 Days
Los Angeles	1,391 NM 3.5 Days	1,432 NM 3.6 Days	1,529 NM 4 Days	991 NM 2.5 Days	--	4,839 NM 12.5 Days	6,380 NM 18 Days	7,578 NM 20 Days	8,959 NM 23 Days
Yokohama	3,941 NM 10 Days	3,810 NM 9.8 Days	3,896 NM 10.3 Days	4,262 NM 11 Days	4,839 NM 12.5 Days	--	1,585 NM 4 Days	1,335 NM 3.4 Days	1,335 NM 3.4 Days
Hong Kong	5,444 NM 14 Days	5,323 NM 13.7 Days	5,406 NM 14.1 Days	5,763 NM 15 Days	6,380 NM 18 Days	1,585 NM 4 Days	--	290 NM 18 Hrs	290 NM 18 Hrs
Kaohsiung Kang	6,187 NM 16 Days	6,587 NM 17 Days	5,155 NM 13.4 Days	6,587 NM 17 Days	7,578 NM 20 Days	1,335 NM 3.4 Days	290 NM 18 Hrs	--	227 NM 14 Hrs
Xingang	6,187 NM 16 Days	6,587 NM 17 Days	4,749 NM 12.5 Days	7,578 NM 20 Days	8,959 NM 23 Days	1,335 NM 3.4 Days	290 NM 18 Hrs	227 NM 14 Hrs	--

Source: United States Government. "Distances Between Ports" Prepared and published by the National Imagery and Mapping Agency, Bethesda, Maryland. Ninth Edition 1997. *Time/Speed/Distance Calculations at 16.1439 Kn/Hr., the average speed Vancouver Port lists to reach Yokohama, Hong Kong, Kaohsiung (Taiwan) and Xingang (China)

6. INDUSTRIAL & COMMERCIAL LAND USE

LAND DESIGNATED IN OFFICIAL COMMUNITY PLAN

	Land Available for Future Development	Directly Developable Land
Total Acres	26,161 ac	689 ac



INDUSTRIAL POTENTIAL

- East Merritt/Diamond Vale: Encourages industrial activities on lands designated for future development located between the Coldwater River and Neilson Street, and properties along Priest Avenue and south of Houston Street
- Collettville: Industrials uses encouraged south of Willow Avenue

COMMERCIAL POTENTIAL

- East Merritt/Diamond Vale: Intensification of service commercial uses in northern portion of the neighbourhood sector. Accommodate new mixed-use commercial establishments that are compatible within the residential neighbourhoods

- Voght Street/North Entry Corridor: Encourage vehicle-oriented commercial uses serving traveling public and residents. Encourage commercial development adjacent to the Merritt Airport to be low intensity so the day-to-day operations of the airport are not adversely affected
- Airport Area: Encourage airport-oriented commercial development that will not affect the areas between Airport Road and the Airport property; and on the Airport property south of the taxiway. Ensure development of lands surrounding runway with not impede future land requirements for expansion

MIXED USE POTENTIAL

- City Centre: Encourage retail and service commercial uses to attract people to the City Centre, a mix of residential uses including smaller dwelling units
- West Merritt: Encourage mixed-use commercial developments that are compatible within residential developments

OTHER/UNDESIGNATED

- South Merritt: Promote the future development of the lands south of the industrial area known as Active Mountain Lands
- South Interchange: Significant developable land is located east of Highway 5 (Coquihala) and south of Highway 97C (Okanagan Connector)

LOCAL PERMIT APPROVALS

Type of Permit	Associate Fees
Building Permit	Construction Value: A) \$1 - 1,000 - \$60 fee B) \$60 + \$6 fee for each additional \$1,000 of construction (up to a maximum construction value of \$100,000) C) \$654 + \$5 fee for each additional \$1,000 of construction (up to a maximum construction value of \$100,000)
Business License	Application fees range from \$50 - 250 dependent on nature of business
Development Permit	Minor (less than \$1 million construction costs) Development Permit - \$750 Major (more than \$1 million construction costs) Development Permit - \$1,200
Occupancy Permit	\$75 (where no building permit is required)
Plan Amendment	\$800.00
Re-Zoning Application	\$800.00
Minor Subdivision Application	\$250 application fee plus \$25/lot
Major Subdivision Application	Less than 3 lots: \$500 application fee plus \$25/lot & \$300 engineering fee 3 - 10 lots: \$1,000 application fee plus \$25/lot & \$500 engineering fee More than 10 lots: \$1,500 application fee plus \$25/lot & \$500 engineering fee

Data Source: City of Merritt - www.merritt.ca

ACQUISITION OF CROWN LAND

- Crown land is land that is owned by the Province of British Columbia. The Province is the steward of the land and can lease, license and sell Crown land for a variety of purposes including residential, commercial, industrial, agricultural, tourism and recreational purposes.

Company	Contact	Notes
Integrated Land Management Bureau	FrontCounterBC@gov.bc.ca Local Office: Cascade Forests 3840 Airport Rd. Merritt, B.C. Telephone: 250-378-8400	Develops Crown land parcels with values up to \$2.5 million
Ministry of Jobs, Tourism and Skills Training	Telephone: 250-371-3952	Handles land sales related to resort development, under the All Seasons Resort Policy.
Ministry of Transportation	Telephone: 250-387-3198	Handles land sales related to public airports and port authorities and the marketing of Crown land is done through MLS Realtors

- To view properties that the Federal Government of Canada has for sale, please visit: <http://reo.pwgsc.gc.ca/public/>

7. UTILITIES

WATER SYSTEM – CITY OF MERRITT

The City of Merritt's water system is made up of five wells that extract water from two different aquifers located under most of the City of Merritt. The wells range from 30 meters to 135 meters deep and can supply up to a combined 371 L/sec. Currently four reservoirs store just over 7.7 million liters of the city's water from these pumps. Another 1.5 million liters is in the approximately 70 km of piping ranging from 100mm to 350mm.

Merritt's aquifer has supplied a safe and consistent supply of potable water for 50+ years. The City of Merritt has taken measures to help protect the aquifer with the use of signs and public education.

In November 2008 to meet permit requirements set out by Interior Health the City of Merritt started to chlorinate its water supply. The chlorination is performed at each pump house at levels regulated by Interior Health.

Data Source: Merritt Public Works - www.merritt.ca

WATER PRODUCTION

Name of Provider	City of Merritt
Rated Capacity	371 L/second
Average Daily Demand	7,258,000 L/day
Peak Demand	14,297,000 L/day
Residential Cost (flat rate)	\$284.64/year
Industrial Cost / 1,000 Gallons	\$2.82
Water Connection Fee (Industrial)	19 mm service construction: \$2,690.12 Over 19 mm service construction: Actual cost

Data Source: Merritt Public Works - www.merritt.ca

WASTE WATER SYSTEM – CITY OF MERRITT

The City of Merritt's Wastewater Treatment Plant treats on average 1,100,000 cubic meters (241,000,000 IG) of wastewater a year. Its Wastewater Treatment Plant uses a technically advanced process called activated sludge. An activated sludge plant creates a special environment for the growth of microorganisms with the introduction of food (Wastewater organics) and oxygen in engineered sized basins. These basins allow the organism's time to feed on the organics that in turn lowers the amount of organics that needs to be removed to meet our Ministry of Environment (M.O.E.) permit. None of the city's final effluent (Cleaned Wastewater) or final product produced normally enters the Nicola or Coldwater Rivers. Only in emergency situations governed by the M.O.E will the city discharge to the Coldwater River. This has only happened once for a day in the past ten years. The City of Merritt's final effluent is put into rapid infiltration basins and percolates into the ground thus having no or very little impact on the rivers or surrounding areas.

The City of Merritt's Wastewater Treatment Plant is one of very few plants in B.C that do not discharge into receiving waters.

The City of Merritt is working with The Good Earth Company to compost the bio-solids that's produced from the treatment plant. The City is also working closely with a public committee to determine the best possible way to make a safe and reusable product. Bio-solids composting results in the production of a Class A compost suitable for a variety of uses.

If at any time a part of the wastewater system fails the plant is monitored with a SCADA (System Control and Data Acquisition). This system will alert a qualified on-call operator 24/7 and verbally tell the operator what and where the problem is before the operator even leaves their home if the call is beyond working hours. This enables the operator to remedy the problem quickly, efficiently and safely.

Data Source: Merritt Public Works - www.merritt.ca

SEWAGE SERVICE

Name of Provider	City of Merritt
Rated Capacity	4,615 m ³ /day
Average Daily Demand	2,646 m ³ /day
Peak Demand	4,334 m ³ /day
Cost per 1000 Gallons - Industrial	Industrial flat rate varies depending on type of business
Sewer Connection Fee for Industrial Users	Connection: \$87.50 Minimum for 4 inch service: \$1,776.25 Minimum for 6 inch service: \$1,872.50

Data Source: Merritt Public Works - www.merritt.ca



LANDFILL AND WASTE MANAGEMENT

Lower Nicola Landfill

Location	2348 Woodward Road (2km W of Lower Nicola on Hwy 8)
-----------------	---

About Eco-Depots

Eco-Depots are an improved way for residents to manage their solid waste. A one-stop drop for all waste and recyclable materials. Eco-Depots also employ a weight-based strategy, which will be based on \$60.00/tonne disposal fee for garbage. This replaces a volume-based system that was used at landfills.

Aspen Grove Transfer Station

Location	7925 Merritt-Princeton Highway 5A
-----------------	-----------------------------------

Approximately 2 km south of the community of Aspen Grove on the east side of Highway 5A.

Upper Nicola Transfer Station

Location	Approximately 6 km up Douglas Lake Road off of Highway 5A
-----------------	---

Right on double Gate Road - Site is the next right.

LICENSED HAZARDOUS MATERIALS DISPOSAL

Name of Site	None located within the community
---------------------	-----------------------------------

No. of Licensed Hazardous Waste Haulers Serving the Area	3
---	---

Data Source: Ministry of Environment, 2013 - "Hazardous Waste Transport Licensees" - www.env.gov.bc.ca/epd/hazwaste/licencees/



ELECTRIC POWER

Provider: BC Hydro	www.bchydro.com
Net Importer/Exporter of Power:	Net Exporter – BC Hydro generates 50,000 GWH of electricity annually.
% of Reserve Margin Including Generation & Net Purchases	8% as per WSCC guidelines plus an additional 8% surplus
Average Electrical Service Availability Index	
▪ Most Recent Year	99.974
▪ Last 5 Years	99.967
Name of Power Pool Membership	Formal membership in WSCC, WSPP, Power Pool of Alberta (PPA), MAPP. Also active in SPP and CalPX
Source Electric Power Deregulated	Wholesale competition allowed
Residential Customers	5.98 cents per Kwh for the first 1,350 Kwh they use over a two month billing period. Above that amount customers will pay 7.21 cents per Kwh for the balance of the electricity used during the billing period.
Business Customers	Average Cost Per kWh
General Service under 35kW for 2 Months	<i>Small business such as stores, small warehouses, offices and auto repair shops</i>
▪ Basic Charge	\$15.48 per day
▪ All kWh	\$0.0736 kWh
▪ Minimum Charge	The Basic Charge
▪ Rate Rider	0.5% Rate Rider applied to all charges, before taxes and levies.
General Service 35 kW and over for 1 month	<i>Retail stores, medium industry, manufacturing, schools, office buildings, supermarkets</i>
▪ Basic Charge	\$15.48 per day
▪ Demand Charge	First 35 kW for NIL Next 115 kW at \$3.77 per kW All additional kW at \$7.23 per kW
▪ Energy Charge	First 14,800 kWh \$0.0736 per kWh All additional kWh \$0.0354 per kWh
▪ Discounts	1.5% on entire bill if customer's electricity is metred at primary potential \$0.25 per kW if customer supplies transformation from a primary to a secondary potential. If a customer is entitled to both discounts the 1.5% discount is applied first.
▪ Minimum Charge	50% of the highest maximum demand charge billed in any month within an on-peak period (1 November to 31 March inclusive) during the preceding 11 months.
▪ Rate Rider	0.5% Rate Rider applied to all charges, before taxes and levies.

Industrial: Transmission Service

Mines, chemical plants, large sawmills, pulp and paper mills, large manufacturing

▪ Demand Charge	\$5.036 per kVa of billing demand
▪ Energy Charge	\$0.02462 per kWh applied to all kWh up to and including 90% of the customers baseline load (CBL) in each billing year. \$0.07360 per kWh applied to all kWh above 90% of the CBL in each billing year.
▪ Minimum Charge	\$5.036 per KVa of billing demand per billing period
▪ Rate Rider	0.5% Rate Rider applied to all charges, before taxes and levies.

Data Source: BC Hydro "Rates" – www.bchydro.com

NATURAL GAS

Fortis BC

www.fortisbc.com

Rate Territory

Inland regions

Firm Contract Rates (2013)

Type of Customer	Small Industrial (RS 5)
Basic & Administration Charge (Monthly)	\$25.30 (CDN)
Delivery & Commodity Demand Charge (per GJ)	\$9.298 (CDN)

Data Source: Fortis BC – "Rate Schedules" – www.fortisbc.com



TELECOMMUNICATIONS

Name of Provider	TELUS Communications Company
Corporate Address	#5-3777 Kingsway Burnaby, BC V5H 3Z7
Website	www.telus.com
Contact Number	
▪ Residential	250-310-2255
▪ Business	250-310-3100
Service Characteristics of The Office:	
▪ Switch Technology	Digital
▪ Fiber Service provided	Yes
▪ 100 Mbps LAN Service Available	Yes
▪ Monitoring- Remotely or On-Site	Remotely
▪ ISDN Available	Yes
▪ ADSL Available	Yes (dependent on location)
▪ ADSL Available From Switch	Yes (dependent on location)
▪ Central Office on Self-Healing Fiber Ring	Yes
▪ Dual Feed from Two Separate Switching Offices	Yes
▪ Multiple Route Diversity	Yes

Data Source: Telus Communications Company - www.telus.com

Name of Provider	Shaw Communications Inc.
Corporate Address	600 - 3rd Avenue SW Calgary, AB T2P 4L4
Website	www.shaw.ca
Contact Number	
▪ Residential	250-376-1175
▪ Business	
Service Characteristics of The Office:	
▪ Switch Technology	Digital
▪ Fiber Service provided	Yes
▪ 100 Mbps LAN Service Available	Yes
▪ Monitoring- Remotely or On-Site	Remotely
▪ ISDN Available	Yes
▪ ADSL Available	Yes (dependent on location)
▪ ADSL Available From Switch	Yes (dependent on location)
▪ Central Office on Self-Healing Fiber Ring	Yes
▪ Dual Feed from Two Separate Switching Offices	Yes
▪ Multiple Route Diversity	Yes

Data Source: Shaw Communications Inc. - www.shaw.ca

8. BUSINESS SUPPORT SERVICES

Business Support Services	
Machine Shop (Tool & Die)	5 (2)
Welding	4
Office Equipment Service & Repair	0
Temporary Employment Services	1
International Support Services	
Import/Export Brokers	3
International Courier Services	3
Freight Forwarders	0

Data Source: Trade and Invest BC - www.britishcolumbia.ca/invest/

9. GOVERNMENT

MUNICIPAL GOVERNMENT

City of Merritt

Form (Structure)	Mayor and Council
Number of Elected Officials	7
Mayor	Neil Menard
Chief Administrative Officer	Allan Chabot

Data Source: Civic Info BC - www.civicinfo.bc.ca/

FIRST NATIONS GOVERNMENT

Coldwater Indian Band

Form (Structure)	Chief & Council
Number of Elected Officials	8
Chief	Lee Spahan
Contact	PO Box 2249 2249 Quilchena Avenue Merritt, B.C. V1K 1B8 Telephone:1-250-378-6174 Email: cheryl@coldwaterband.com

Lower Nicola Indian Band

Form (Structure)	Chief & Council
Number of Elected Officials	8
Chief	Aaron Sam
Contact	181 Nawishaskin Lane Merritt, B.C. V1K 0A7 Telephone:1-250-378-5157 Email: reception@lnib@net

Nooaitch First Nation

Form (Structure)	Chief & Council
Number of Elected Officials	5
Chief	Michel Ko'waintco
Contact	2954 Shackelly Road Merritt, B.C. V1K 1N9 Telephone:1-250-378-6141 Email: reception@nooaitch.com

Shackan Indian Band

Form (Structure)	Chief & Council
Number of Elected Officials	3
Chief	Percy Joe
Contact	2160 Settler's Road Merritt, B.C. V1K 1M9 Telephone:1-250-378-5410 Email: shackan@ocis.net

Upper Nicola Indian Band

Form (Structure)	Chief & Council
Number of Elected Officials	6
Chief	Daniel Manuel
Contact	PO Box 370 Merritt, B.C. V1K 1B8 Telephone:1-250-350-3342 Email: unb@uppernicolaband.com

Data Source: Civic Info BC - www.civicinfo.bc.ca/

REGIONAL DISTRICT

Thompson-Nicola Regional District

Form (Structure)	Chair and Directors
Number of Elected Officials	26
Chair	John Ranta
Chief Administrative Officer	Sukhbinder Gill

Data Source: Civic Info BC - www.civicinfo.bc.ca/

PROVINCIAL

Government of British Columbia

Form (Structure)	British Parliamentary
Number of Elected Officials	85
How Often Does Legislature Convene	69 days in 2014

Data Source: Legislative Assembly of British Columbia - "2014 Parliamentary Calendar" - www.leg.bc.ca/calendar.htm

PREMIER

Name	Christy Clark
Affiliation	British Columbia Liberal Party
Year Elected	May 14, 2013
Current Term Expiration	4 years
Allowed to Run for Another Term	Yes
Next Election Date	May 2017

PROVINCIAL GOVERNMENT REPRESENTATION

Name of Member of Legislative Assembly (MLA)	Jackie Tegart
Total Members of Legislative Assembly	1
Electoral District	Fraser-Nicola
Party Affiliation	BC Liberal Party

FEDERAL GOVERNMENT REPRESENTATION

Name of Member of Parliament (MP)	Dan Albas
Electoral District	Okanagan-Coquihalla
Year Elected	October 14, 2008
Party Affiliation	Conservative Party of Canada

SENATORS

No. of Appointed Officials	In Canada there are ordinarily 105 Senators appointed by the Governor General on the advice of the Prime Minister.
----------------------------	--

10. HOUSING

HOUSING CHARACTERISTICS

Dwelling Type	Number
Single-detached houses	2,690
Semi-detached houses	240
Apartments, duplex	415
Other dwellings	595
Total Number of Private Dwellings	4,010

Data Source: Stats Can Merritt & TNRD Areas M&N – 2011 Census – “Household and Dwelling Characteristics” - www12.statcan.gc.ca/census-recensement/index-eng.cfm

AVERAGE HOUSING VALUES

Municipality	Single Family Homes	Total Property Tax & Charges
City of Merritt	\$216,395	\$3,149

Data Source: Ministry of Community, Sport, and Cultural Development, 2014 - http://www.cscd.gov.bc.ca/lqd/infra/tax_rates/



11. TAXATION

CORPORATE INCOME TAX

	Small Business	Manufacturing	Non-Manufacturing
Federal			
▪ Rate	11%	15%	15%
▪ Formula (Sales, Property & Payroll)	n/a	n/a	n/a
▪ Accelerated Depreciated Permitted	Yes	Yes	Yes
Provincial			
▪ Rate	2.5%	10.0%	10.0%
▪ Formula (Sales, Property & Payroll)	Sales & Payroll	Sales & Payroll	Sales & Payroll
▪ Accelerated Depreciated Permitted	No	No	No
Local			
<i>British Columbia has no local taxes</i>			
Total Federal and Provincial Corporate Income Tax	13.5%	25%	25%

PERSONAL INCOME TAX

	Federal	Provincial	Local
Earned Income	15 – 29%	5.06 – 14.7%	0%
Unearned Income (e.g. Dividends)	0 – 14.55%	0 – 3.92%	0%
Capital Gains	7.5 – 14.5 %	2.08 – 7.35%	0%

SALES / USE TAX

	Rate	Notes
Goods and Services Sales Tax	5%	GST on business inputs is fully recoverable
Provincial Sales Tax	7%	PST Retail Sales Tax
Local	0%	BC has no local sales tax
Total (Effective Combined Rate) Business	7%	Net of GST 0% for production machinery and equipment for eligible manufacturers

SALES TAX RATE BY UTILITY

	Yes/No	Rate	Notes
Electric Power	Yes	12%	5% GST is fully recoverable
Natural Gas	Yes	12%	5% GST is fully recoverable
Fuel Oil	Yes	12%	5% GST is fully recoverable
Water	No	0%	-
Sewer	No	0%	-
Hazardous Waste Disposal	Yes	12%	5% GST is fully recoverable

TELEPHONE SUBJECT TO SALES/USE TAX

	Yes/No	Rate	Notes
Local	Yes	12%	5% GST is fully recoverable
Long Distance	Yes	12%	5% GST is fully recoverable

MACHINERY AND EQUIPMENT SUBJECT TO SALES/USE TAX

	Yes/No	Rate	Notes
Production	No	0%	-
Non-Production	Yes	12%	5% GST is fully recoverable
Pollution Control	Yes	12%	5% GST is fully recoverable
Office Equipment & Fixtures	Yes	12%	5% GST is fully recoverable

SALES/USE TAX ON TANGIBLE PROPERTY

	Yes/No	Rate	Notes
Office Building Construction Materials	Yes	12%	5% GST is fully recoverable
Industrial Building Construction Materials	Yes	12%	5% GST is fully recoverable
Manufactures Raw Materials	No	0%	-
Standard Software	Yes	12%	5% GST is fully recoverable
Custom Software	Yes	12%	5% GST is fully recoverable

SALES/USE TAX ON INTANGIBLE PROPERTY

	Yes/No	Rate	Notes
Accounts Receivable	No	0%	-
Capital Stock	No	0%	-
Stock/Bond Transaction Fee	No	0%	-

PROPERTY TAX – CITY OF MERRITT

Levy	Residential	Utility	Major Industry	Light Industry	Business	Non-Profit	Farm
General Municipal & Debt	4.77524	39.18868	60.14019	30.39117	15.74065	6.75412	23.06687
Regional Hospital District	0.3927	1.3743	1.3350	1.3350	0.9620	0.3927	0.3927
Regional District	1.3134	4.6002	4.4687	4.4687	3.2201	1.3143	1.3143
Transit	0.1091	0.3820	0.3710	0.3710	0.2674	0.1091	0.1091
School District	2.6940	14.0000	6.2000	10.8000	6.2000	3.4000	6.9000
BCAA	0.0610	0.5213	0.1811	0.1811	0.0610	0.0610	0.0610
MFA	0.0002	0.0007	0.0007	0.0005	0.0002	0.0002	0.0002
Total	9.34564	60.06718	72.69669	47.54747	26.45135	12.03142	31.84417

PROPERTY TAX – ELECTORAL AREA M

Levy	Residential	Utility	Major Industry	Light Industry	Business	Non-Profit	Farm
General Area M	1.9198	6.7193	6.5273	6.5273	4.7035	1.9198	1.9198
Building Tax Area M	0.1072	0.3752	0.3645	0.3645	0.2626	0.1072	0.1072
Regional Hospital	0.3919	1.3716	1.3324	1.3324	0.9601	0.3919	0.3919
School	2.6940	14.0000	6.2000	10.8000	6.2000	3.4000	6.9000
BCAA	0.0610	0.5213	0.1811	0.1811	0.0610	0.0610	0.0610
MFA	0.0002	0.0007	0.0007	0.0005	0.0002	0.0002	0.0002
Total	5.1741	22.9881	14.606	19.2058	12.1874	5.8801	9.3801

PROPERTY TAX – ELECTORAL AREA N

Levy	Residential	Utility	Major Industry	Light Industry	Business	Non-Profit	Farm
General Area N	1.9248	6.7368	6.5443	6.5443	4.7158	1.9248	1.9248
Building Tax Area N	0.1076	0.3766	0.3658	0.3658	0.2636	0.1076	0.1076
Regional Hospital	0.3919	1.3716	1.3324	0.3645	0.9601	0.3919	0.3919
School	2.6940	14.0000	6.2000	1.3324	6.2000	3.4000	6.9000
BCAA	0.0610	0.5213	0.1811	0.1811	0.0610	0.0610	0.0610
MFA	0.0002	0.0007	0.0007	0.0005	0.0002	0.0002	0.0002
Total	5.1795	23.007	14.6243	8.7886	12.2007	5.8855	9.3855

Data Source: City of Merritt - www.merritt.ca

Data Source: Government of B.C. - "Rural Property Tax" - www.sbr.gov.bc.ca/applications/rpt/

Property Tax rates effective 2013, Property Tax rates per \$1000 Assessed Personal Property (M&E, Inventory, Other)

Municipal Note: BC does not have Personal Property Taxes.



12. INTERNATIONAL RESOURCES

INVESTMENT AND BUSINESS SUPPORT OFFICES

Merritt Economic Development

Contact Name	Business & Economic Development Manager
Address	Box 189 2185 Voght Street Merritt, BC V1K 1B8
Phone Number	250-378-4224
Website	www.merritt.ca

Merritt & District Chamber of Commerce

Contact Name	Etelka Gillespie, Manager
Address	Box 1649 2058 B Granite Avenue Merritt, BC V1K 1B8
Phone Number	250-378-5634
E-Mail	manager@merrittchamber.com

Southern Interior Development Initiative Trust

Contact Name	Helen Patterson, Controller
Address	204-3131 29th Street, Vernon, BC V1T 5A8
Phone Number	250-545-6829
E-Mail	support@sidit-bc.ca

Community Futures Nicola Valley

Contact Name	Rob Miller, Manager
Address	2185B Voght Street, PO Box 159, Merritt, BC V1K 1B8
Phone Number	250-378-3923
Webpage	www.cfdcnv.com

Small Business BC

Address	82 - 601 West Cordova Street, Vancouver, BC V6B 1G1
Phone Number	604-775-5525
Webpage	www.smallbusinessbc.ca

Thompson Nicola Film Commission

Contact Name	Victoria Weller, Executive Director of Film
Address	300 – 465 Victoria Street, Kamloops, BC V2C 2A9
Phone Number	250-377-8673 ext. 7058
E-Mail	vweller@tnrd.ca

Business Development Bank of Canada

Address	205 Victoria Street Kamloops, BC V2C 2A1
Phone Number	250-851-4900

Southern Interior Beetle Action Coalition

Contact Name	Dalyce Brandt, Administrator
Address	PO Box 3006, Kamloops, BC V2C 6B7
Phone Number	250-378-1929
E-Mail	admin@sibacs.com

Ministry of Jobs Tourism and Skills Training – Regional Economic Operations

Contact Name	Myles Bruns, Regional Project Manager, Thompson-Okanagan
Address	250 – 455 Columbia Street, Kamloops, BC, V2C 6K4
Phone Number	250-371-3931
E-Mail	myles.bruns@gov.bc.ca

Ministry of International Trade

Contact Name	Michael Track, A/Executive Director – Investor Services
Address	999 Canada Place, Suite 730, Vancouver, BC, V6C 3E1
Phone Number	604-775-2202
E-Mail	michael.track@gov.bc.ca

FINANCIAL INSTITUTIONS

Name of Company	Address	Phone Number	Website
Canadian Imperial Bank of Commerce	2002 Quilchena Avenue Merritt, BC V1K 1A4	250-378-2296	www.cibc.com
Interior Savings	1959 Voght Street Merritt, BC V1K 1B8	250-378-5181	www.interiorsavings.com
Royal Bank of Canada	2090 Quilchena Avenue Merritt, BC V1K 1B8	250-378-5196	www.rbc.com

Data Source: DRF Consulting Research, 2013

EMPLOYMENT ASSISTANCE

Name of Company	Address	Phone Number	Website
Work BC Merritt Employment Services Centre	PO Box 358 Stn Main Merritt, BC V1K 1B8	250-378-5151	www.merrittesc.ca
Nicola Valley Aboriginal Employment & Training Centre	PO Box 188 Stn Main 2090 Coutlee Avenue Merritt, BC V1K 1B8	250-378-4253	www.aved.gov.bc.ca/aboriginal/programs.htm

Data Source: DRF Consulting Research, 2013

AIR TRANSPORTATION SERVICE

Largest International Airport	Vancouver International Airport
Distance to Airport	268 km
No. Of Weekly Non-Stop Flights To	
▪ Asia	Average 99/Week
▪ Europe	Average 42/Week
▪ Mexico	Average 9/Week
▪ United States	Average 722/Week

Closest International Airport	Kelowna International Airport
Distance to Airport	127 km
No. Of Weekly Non-Stop Flights To	
▪ Greater Vancouver	84
▪ Calgary	70
▪ Edmonton	35
▪ Seattle	28
▪ Greater Victoria	7

Data Source: DRF Consulting Research, 2013



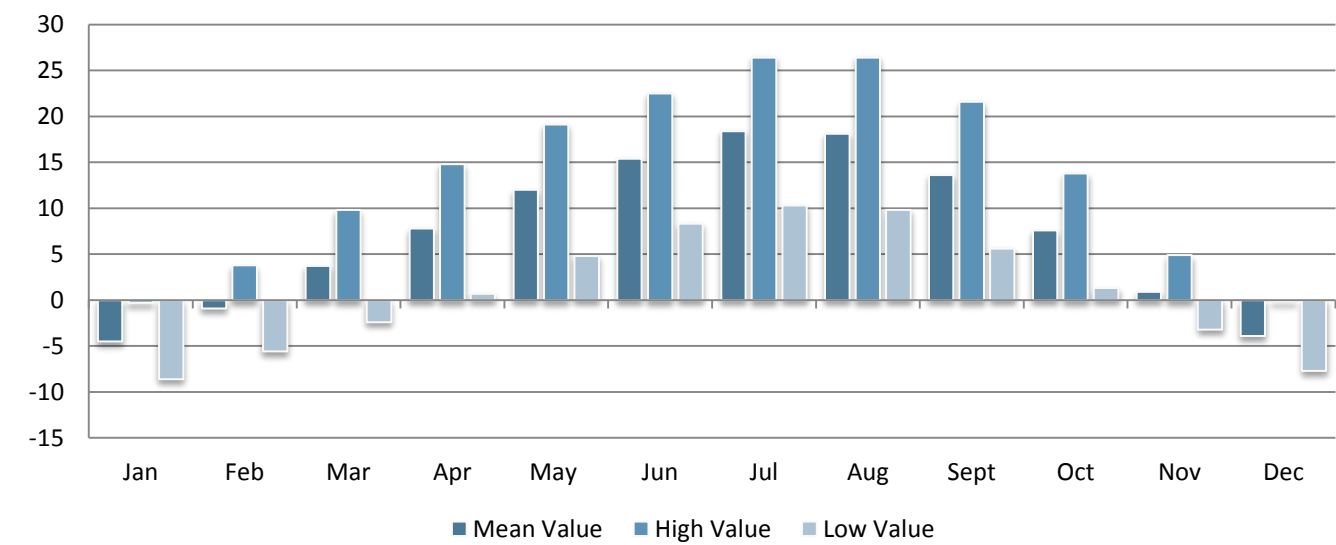
13. QUALITY OF LIFE

CLIMATE

Location: Merritt, BC, Canada
Latitude: 51.6500° N
Longitude: 120.0333° W



AVERAGE TEMPERATURE IN DEGREES CELSIUS BY MONTH



Data Source: Environment Canada - "National Climate Data and information Archive," 2010 – <http://www.climate-charts.com/Countries/Canada.html#BC>

CULTURE

TOP ANNUAL EVENTS

Top Events	Date(s)
Annual Valley Visual Arts Show and Sale	March
April Fools Easter Weekend Blackpowder Shoot	April
Bass Coast Electronic Music & Arts Festival	August
Garlic Festival & Tractor Show	September
High School Rodeo	May
Little Britches Rodeo	June
Merritt Centennials Hockey	August - March
Merritt Country Christmas	November
Merritt Country Run	June
Nicola Valley Fall Fair	Labour Day weekend
Nicola Valley Farmers' Market	May - October
Nicola Valley Pro Rodeo	Labour Day weekend
Pacific Forest Car Rally	October
Ranch Rodeo	July
Rockin' River Musicfest	July - August
Rodeo Fair Days	Labour Day weekend
Ty Pozzobon Invitational PBR	May-June
XK Rodeo	September

Data Source: City of Merritt - www.merritt.ca

CULTURAL PLACES AND AMENITIES

Amenity	Number
▪ Theatres	1
▪ Museums	1
▪ Community halls	3
▪ Art Galleries	1
▪ Libraries	1
▪ National Historic Sites	3
▪ Merritt Walk of Stars	1

Data Source: Tourism BC - "Merritt" - www.hellobc.com/clearwater/things-to-do.aspx



CULTURE AND RECREATION

Amenity	Number
Number of Enclosed Shopping Malls	1
Religious Institutions	10
Music and Arts Groups	6

Data Source: DRF Consulting Research, 2015



RECREATIONAL AMENITIES IN THE THOMPSON-NICOLA REGIONAL DISTRICT

Activity	Amenity
▪ Adventure Resorts & Guest Ranches	▪ Quilchena Resort
▪ Biking & Skating	▪ Merritt Skate Park
▪ Golf	▪ Merritt Golf & Country Club ▪ Quilchena on the Lake Golf & RV Park ▪ Sagebrush Golf & Country Club
▪ Heritage & Cultural Experiences	▪ Baillie House ▪ Canadian Country Music Hall of Fame ▪ Nicola Valley Museum & Archives
▪ Lakes	▪ Nicola Lake
▪ Provincial Parks	▪ Monck Provincial Park
▪ Rivers	▪ Nicola River ▪ Thompson River
▪ RV & Camping	▪ Claybanks RV Park ▪ Merritt Beach RV Park ▪ Moon Shadows RV & Campground
▪ Sporting & Exhibition Centres	▪ Merritt Convention & Civic Centre ▪ Merritt Curling Club Rink ▪ Nicola Valley Memorial Arena & Aquatic Centre
▪ Summer Outdoor Recreation	▪ Merritt Trail System
▪ Winter Outdoor Recreation	▪ Sun Peaks Snowmobile Tours ▪ Sun Peaks Terrain Park
▪ Winter Ski Resorts	▪ Nicola Nordic Ski Club ▪ Sun Peaks Resort

Data Source: Thompson-Okanagan Tourism Association - www.totabc.org

HEALTH

HOSPITALS

Hospital	Nicola Valley Hospital
Teaching Hospital	Yes
Number of Beds	13
Outpatient Clinic	Yes
Contact	3451 Voght Street Merritt, BC V1K 1C6 Tel: 250-378-2242

Data Source: Interior Health Authority – www.interiorhealth.com

PHYSICIANS AND DENTISTS

Health Providers	Number
Physicians	7
Dentists	5
Ratio Physicians per 1000	0.84 : 1000
Ratio Dentists per 1000	0.7 : 1000

Data Source: Interior Health Authority – www.interiorhealth.com





Business & Economic Development Manager

City of Merritt

Box 189, 2185 Voght Street, Merritt, BC V1K 1B8

Tel: 250-378-4224

Website: www.merritt.ca



Northern Development Initiative Trust
Contact for information on financial
incentives for manufacturing companies

www.northerndevlopment.bc.ca



**TRADE AND INVEST
BRITISH COLUMBIA**

Invest BC
Contact for investor site selection
and expansion services.

www.investbc.com



Thompson-Nicola Regional District

Contact for information on services
throughout the TNRD

www.tnrd.ca



Thompson-Nicola Film Commission

Contact for information on services
throughout the TNFC

www.tnrdfilm.com